

W.P 3.2.1 Data ingestion through Finna

Finna

Finna is a public search service that collects millions of items of cultural and scientific material in Finland.

Over 400 different cultural heritage organizations, such as libraries, museums and archives, are providing their unique material through Finna.

The joint usage view of Finna.fi has over 18 million material records, of which over 3,3 million are available online.

The National Library of Finland maintains and develops the Finna service continuously in cooperation with archives, libraries, museums and other partners.

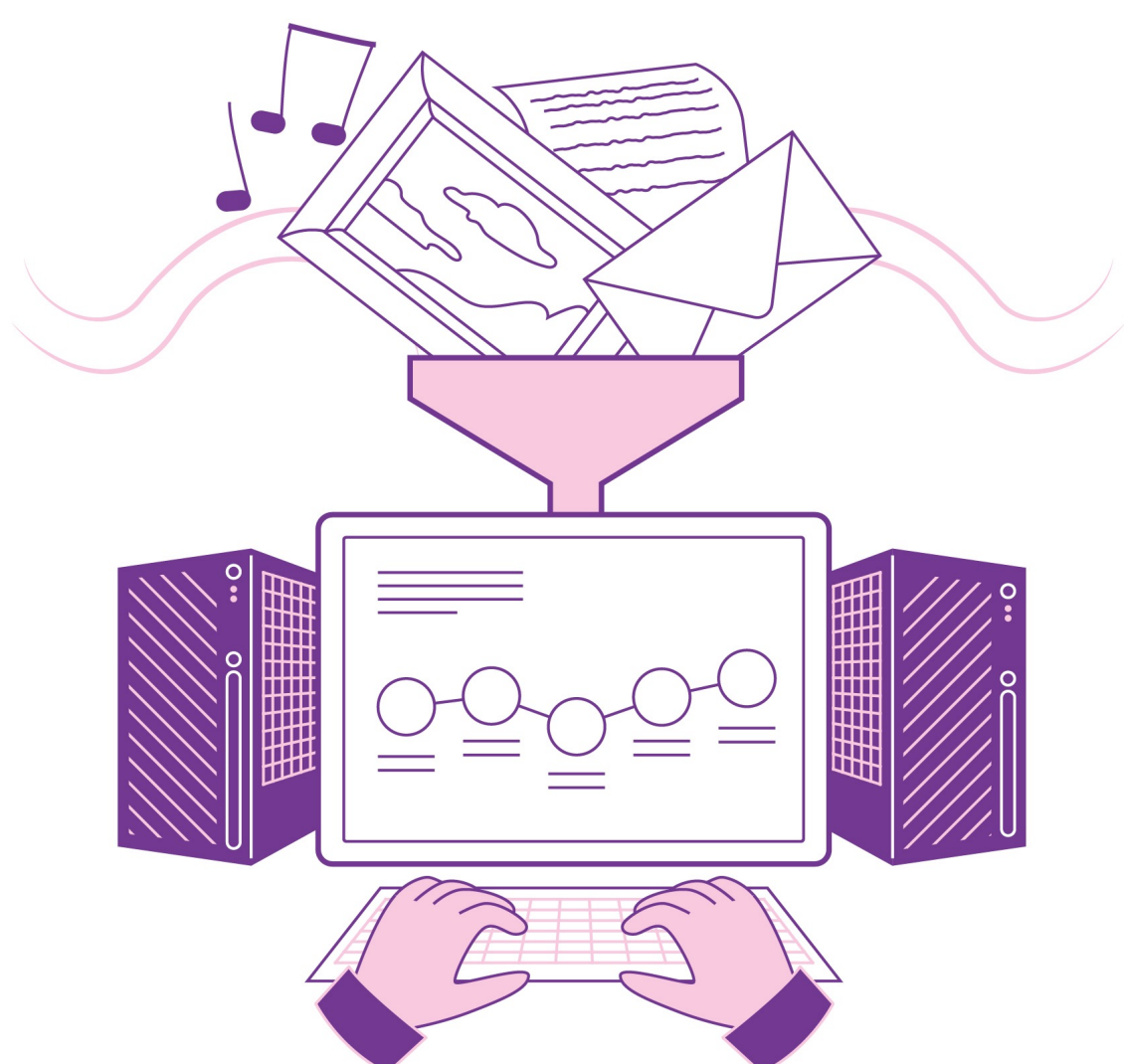
Finna API

Finna API is an open interface which provides a way to perform searches to the material provided by the organizations participating in Finna.fi. For example, the metadata of Fennica - the Finnish National Bibliography and Viola - the Finnish National Discography are included in the API.

Finna API provides descriptive information and metadata of the material. The interface also includes links to photos and other material offered via the Finna.fi service that may be subject to limitations. The usage is free of charge.

Most methods return the data as UTF-8 encoded JSON, served using the application/json MIME type.

Documentation: api.finna.fi

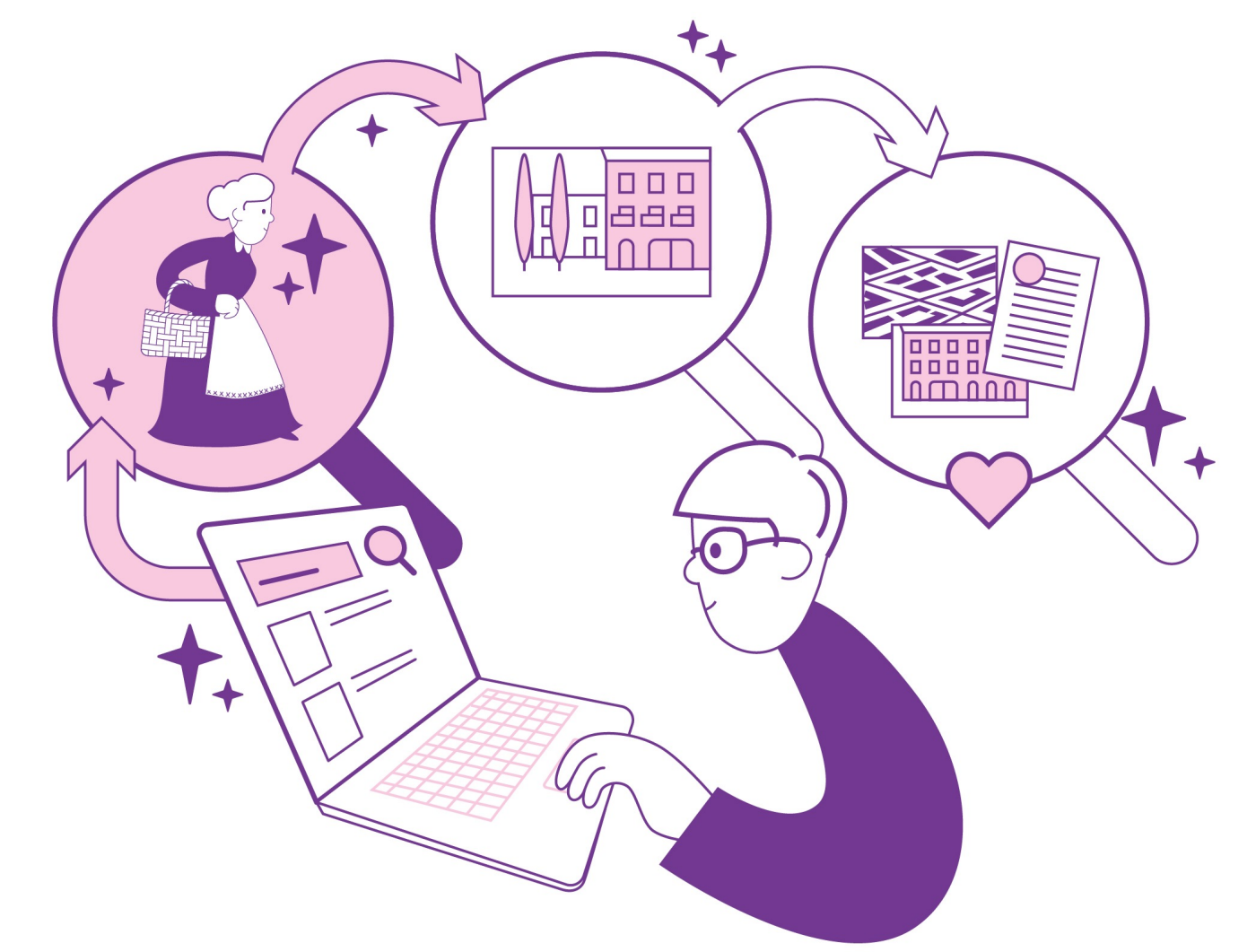


WE WILL PROMOTE THE
UTILISATION OF MATERIAL AS DATA

Bringing open cultural heritage material closer to the researchers

The goal of this sub-package is to enhance the existing Finna services to better attend on the needs of Digital Humanities (DH) researchers and connect the service to FIN-CLARIAH digital research infrastructure. This will enhance the researcher's access to open cultural heritage data. In the process, Finna will gain a more comprehensive understanding of the needs of the researchers to furthermore improve the Finna reuse services, as well as the technical features of the Finna API.

The focus will be on the open visual material provided by cultural heritage organizations in Finna.fi.



WE WILL DEVELOP SMART WAYS
TO FIND INFORMATION

TASK 1

The first task includes of gathering and gaining a comprehensive understanding of the DH researchers needs, use cases, and possible challenges concerning reuse of open visual cultural heritage material.

The understanding will be gathered through a questionnaire aimed at visual cultural researchers. Further interviews can also be arranged.

TASK 2

In the second task it is important to find the right technical solutions to connect the material provided in Finna with FIN-CLARIAH research infrastructure. This will contain discussions and workshopping with CSC (IT Centre for Science Ltd.), as well as reviewing possible current limitations of the Finna API. It needs to be taken into account that the original materials are not locally stored in Finna.fi but in the co-operating organization's servers.

The goal is to find the most feasible solutions for all players involved and at the same time improve the Finna API and reuse services as a whole.

TASK 3

After we have gained essential information in the tasks described above, we can proceed to a testing phase. In collaboration with 1-3 cultural heritage organizations, we will test the processes of bringing open visual material for the researcher's use. Limitation of download times, server capacities, image sizes, etc. will be defined, and emerging challenges can be tackled.

In the final stage, the goal is to open all visual cultural heritage material with appropriate licences for usage through the path from Finna to FIN-CLARIAH. Relevant documentation of the processes and usage of Finna APIs will be provided for future users and researchers.